

The State of Alabama

2020

Total of listed Types and Towns: 206



2.669



2.4673

The following are illustrations of Types with a PIC Note in the listings.



FAYETTE PSS L 2 LPC 0.4552



0.4273



0.1262



3.64(83/14)

Pratt City Branch / BIRMINGHAM ALA

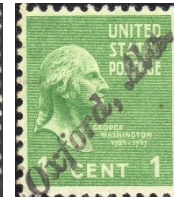
The following are illustrations of Alabama Towns with Type Numbers.



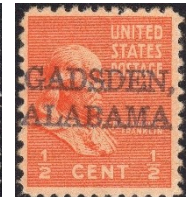
1.1253



1.2163 and a 2nd example



1.125401



1.4183



2.4214



2.425



2.4263



2.427



2.428



2.4283



2.4293



2.46



2.46 CON



2.460005

AL



2.4614



2.465



2.4653



4.466454



2.4674



LIVINGSTON 2.469



2.625



2.66



2.64(5/9)



2.669



ORRVILLE 7.4643 DLR



4.4274



4.4614



4.4644



4.48(14/53

ALABAMA

2020

| Type | Note | Town | Note | Usage |
|-----------|------|-------------------|------|--------------------------|
| 0.4263 | | ABBEVILLE, | | 1926 |
| 2.46 | | ABBEVILLE | | 1930 |
| 4.4644 | | ABBEVILLE | | 1926 |
| 2.460005 | | ALABAMA CITY / AL | | 1954 |
| 2.6614 | | ALEXANDER CITY | | 1926 |
| 2.4613 | | ALEXANDER CITY, | | 1926 |
| 2.461 | | ALEXANDER CITY, | | 1932 |
| 2.421 | | ALICEVILLE | | 1935 |
| 2.425 | | ALICEVILLE | | 1922 |
| 2.4663 | | ALICEVILLE | | 1938 |
| 4.4654 | | ANSLEY, | | 1922 |
| 4.4254 | | ARITON | | 1922 |
| 2.4293 | | ATHENS | | 1926 |
| 2.4674 | | ATHENS, | | 1912, 13, 32 |
| 2.625 | | BAY MINETTE | | 1938 |
| 2.466 | | BERRY | | 1938 |
| 2.4644 | | BESSEMER | CQ | 1917 |
| 4.4643 | | BIRMINGHAM | | 1922, 23, 26 |
| 4.4614 | | BIRMINGHAM | | 1918, 22, 23, 26 |
| 4.4613 | | BIRMINGHAM | | 1912 |
| 4.4613 | | BIRMINGHAM, | | 1918, 22, 23, 26, 28, 32 |
| 2.66 | | BRIDGEPORT | | 1917 |
| 4.4644 | | BRIDGEPORT | | 1940 |
| 2.46 | | BRUNDIDGE | | 1954 |
| 2.666 | | BUTLER | | 1938 |
| 4.4254 | | CAMDEN | | 1926, 32 |
| 2.4216 | | CARROLLTON | | 1932 |
| 2.4643 | | CARROLLTON, | | 1931, 38 |
| 2.425 | | CARSON HILL, | | 1926 |
| 2.46 | | CENTER, | | 1922, 26 |
| 2.64(5/6) | | CENTERVILLE | | 1938 |
| 1.1293 | | CHATOM, | | 1938 |
| 2.666 | | CHEROKEE | | 1923, 26 |
| 2.46 | | CHEROKEE, | | 1923 |
| 2.461 | | CITRONELLE | | 1938 |
| 2.64(5/6) | | CITRONELLE | | 1938 |
| 2.4214 | | CITRONELLE, | | 1926, 34, 38, 40 |
| 2.421 | | COFFEEVILLE | | 1926, 32 |
| 2.461 | | COLLINSVILLE, | | 1931 |

| | | | |
|-----------|-----|---------------|------------------|
| 0.4514 | | COURTLAND, | 1926, 31, 35, 38 |
| 2.46 | | COURTLAND, | 1938, 43SD |
| 2.46 | | CRICHTON, | 1934, 36, 37, 38 |
| 2.4263 | | CROSSVILLE, | 1926 |
| 2.4674 | | CULLMAN, | 1914 |
| 2.4643 | | DAWSON, | 1938 |
| 2.4643 | | DEATSVILLE, | 1938 |
| 2.465 | | DECATUR, | 1912 |
| 2.46 | | DEMOPOLIS | 1926, 32 |
| 2.425 | | DEMOPOLIS, | 1926 |
| 2.6694 | | DEMOPOLIS, | 1938, 40 |
| 2.46 | | DOZIER, | 1918 |
| 1.125 | | ELBA, | 1921 |
| 2.4653 | | ELDRIDGE, | 1945 |
| 2.46 | | ELKMONT | 1926 |
| 2.64(5/6) | | ELKMONT | 1938 |
| 2.46 | | ENTERPRISE | 1926 |
| 2.4653 | | ENTERPRISE, | 1938 |
| 2.425 | | EVERGREEN | 1926 |
| 2.46 | | EVERGREEN | 1926 |
| 2.64(5/6) | | EVERGREEN | 1938 |
| 2.666 | | EVERGREEN | 1938 |
| 2.4263 | | EVERGREEN, | 1935 |
| 2.46 | | FAIRFAX, | 1926, 31, 32 |
| 2.465 | | FAIRFAX, | 1923 |
| 2.469 | | FAIRFAX | 1940 |
| 2.46 | | FAIRHOPE | 1926, 32 |
| 0.4552 | PIC | FAYETTE | 1926 |
| 2.46 | | FAYETTE | 1922, 26 |
| 2.666 | | FLORALA | 1938 |
| 2.46 | | FLORALA, | 1926, 31, 38 |
| 2.466454 | | FLORALA, | 1938 |
| 2.4663 | | FLORALA, | 1938, 40 |
| 2.4214 | | FORT DEPOSIT, | 1917 |
| 2.66 | | FORT PAYNE | 1913 |
| 1.2613 | | GADSDEN, | 1926 |
| 1.4183 | | GADSDEN, | 1938, 45 |
| 4.42431 | | GILBERTOWN | 1938 |
| 2.4243 | | GILBERTOWN, | 1938 |
| 2.4214 | | GOOD WATER | CQ 1922, 32 |
| 2.64(5/6) | | GOODWATER | 1954 |
| 2.4264 | | GORDO | 1931 |
| 2.466 | | GORDO | 1938 |

| | | | | |
|-----------|-----|---------------|----|----------------------|
| 4.4662 | | GORDO | | 1922 |
| 7.4643 | | GREENVILLE | | 1926, 37, 38 |
| 2.46652 | | GUIN, | | 1938 |
| 2.6216 | | GUNTERSVILLE | | 1954 |
| 2.4643 | | HALEYVILLE | | 1932 |
| 2.4263 | | HAMILTON, | | 1926, 32 |
| 2.46126 | PIC | HARTFORD | | 1922 |
| 2.466 | | HEFLIN, | | 1929 |
| 2.4643 | | HOLY TRINITY | | 1926, 32, 37, 38, 39 |
| 2.465 | | HUNTSVILLE, | | 1913 |
| 4.4613 | | HUNTSVILLE, | | 1917 |
| 2.465 | | HURTSBORO, | | 1938 |
| 1.1144 | | JASPER, | | 1926 |
| 1.2163 | | JASPER, | | 1919 |
| 2.46 | | JASPER, | | 1926, 32 |
| 2.466 | | KENNEDY | | 1938 |
| 2.666 | | KINSTON | | 1938 |
| 2.46 | | LANETT | | 1926 |
| 2.4674 | | LANETT | CQ | 1917 |
| 1.2243 | | LANETT, | | 1943 |
| 2.46002 | | LANGDALE, | | 1926 |
| 2.64(5/6) | | LANGDALE | | 1954 |
| 2.44(5/9) | | LEEDS | | 1938 |
| 2.64(5/9) | | LEEDS | | 1938 |
| 2.466 | | LINDEN | | 1926, 38 |
| 2.469 | | LIVINGSTON | | 1922 |
| 2.5644 | | LIVINGSTON | CQ | 1908 |
| 2.4263 | | LOCKHART, | | 1938 |
| 2.465 | | LOCKHART, | | 1917 |
| 2.4674 | | LOXLEY | | 1931, 38 |
| 2.466454 | | LOXLEY, | | 1938 |
| 0.4253 | | MADISON, / AL | | 1938, 54 |
| 2.460005 | | MADISON, / AL | | 1964 |
| 2.466 | | MARION | | 1938 |
| 4.4662 | | MARION | | 1917, 22 |
| 2.4293 | | MARION, | | 1926, 38 |
| 2.46 | | MARION, | | 1922, 23, 26, 38 |
| 2.4263 | | MCKENZIE, | | 1938 |
| 2.4656 | | MCKENZIE, | | 1926 |
| 4.4274 | | MIDLAND CITY | | 1934 |
| 2.4262 | | MILLPORT, | | 1926 |
| 0.4263 | PIC | MILLPORT, | | 1938, 50, 54, 59 |
| 2.46 | | MOBILE | | 1965 |

| | | | | |
|-----------|-----|----------------------|----|------------------|
| 2.461 | | MONROEVILLE | | 1922 |
| 2.46 | | MORRIS, | | 1938 |
| 2.42 | | MOULTON | | 1938 |
| 2.46 | | MOULTON | | 1926 |
| 2.460005 | | MOUNTAIN CREEK, / AL | | 1964 |
| 2.4243 | | NEW BROCKTON, | | 1926 |
| 2.461 | | NEW BROCKTON, | | 1938 |
| 2.4214 | | NEW DECATUR | | 1917 |
| 1.1613 | | NEW HOPE, AL | | 1959D |
| 2.4153 | | NORMAL | | 1926 |
| 2.4663 | | NORMAL | | 1922 |
| 2.460005 | | NORTHPORT, / AL | | 1964 |
| 2.64(5/6) | | NOTASULGA | | 1938 |
| 1.1254 | | NOTASULGA, | | 1938 |
| 2.425 | | ODENVILLE | | 1926 |
| 1.2284 | | OPELIKA, | | 1913 |
| 2.46 | | OPELIKA, | | 1917 |
| 2.428 | | OPP, | | 1926, 32 |
| 2.4283 | | OPP, | | 1930, 31, 38 |
| 2.4293 | | OPP, | CQ | 1922 |
| 7.4643 | DLR | ORRVILLE | | 1917 |
| 1.225401 | | OXFORD, | | 1938 |
| 1.1643 | | OZARK, | | 1938, 40 |
| 1.2644 | | OZARK, | | 1913 |
| 2.46 | | PANOLA, | | 1926 |
| 2.46 | | PISGAH, | | 1938 |
| | | PRATT CITY BRANCH | | |
| 1.5273 | PIC | ENSLEY (ALA.) | CQ | 1912 |
| 2.666 | | RED BAY | | 1938 |
| 2.46 | | RED BAY, | | 1926, 32, 37, 38 |
| 2.4674 | | RED BAY, | | 1917 |
| 2.64(5/6) | | RED LEVEL | | 1938 |
| 2.46 | | REFORM, | | 1954 |
| 1.2644 | | REPTON, | | 1938 |
| 1.5253 | | RIVERTON, | | 1922 |
| 2.46 | | ROANOKE | | 1937 |
| 2.421 | | ROBERTSDALE, | | 1926 |
| 2.56 | | ROBERTSDALE, | | 1959 |
| 2.666 | | SAMSON | | 1938 |
| 2.4214 | | SCOTTSBORO | | 1922, 26 |
| 2.4243 | | SCOTTSBORO, | | 1926, 31 |
| 2.4644 | CON | SCOTTSBORO | CQ | 1914 |
| 2.4643 | | SCOTTSBORO, | | 1938 |

| | | | | |
|-----------------|-----|-------------------|----|------------------|
| 2.63(5/9) | | SCOTTSBORO | | 1940 |
| 2.427 | | SELMA | | 1912 |
| 2.46 | | SHAWMUT | | 1926 |
| 0.4644 | | SILURIA | | 1938, 54 |
| 2.46(4/5) | | SPRING HILL | | 1938 |
| 2.4663 | | SPRING HILL, | | 1938 |
| 2.4256 | | STEVENSON | | 1938 |
| 2.46 | | STEVENSON, | | 1918 |
| 2.461 | | SYLACAUGA, | | 1913, 14 |
| 2.425 | | TALLASSEE | CQ | 1918 |
| 4.48(14/53) | | TALLASSEE | | 1917 |
| 2.66 | | THOMASVILLE, | | 1913 |
| 2.4643 | | THORSBY | | 1938 |
| 2.4663 | | THORSBY, | | 1926, 32, 34 |
| 2.460005 | | TOWN CREEK, / AL | | 1964 |
| 1.2614 | | TRAFFORD, | | 1938 |
| 1.4563 | | TRINITY | | 1912 |
| 2.426 | | TROY, | | 1913 |
| 0.1262 | PIC | TUSCALOOSA | | 1919, 20, 22, 24 |
| 1.1283 | | TUSCUMBIA | CQ | 1917 |
| 2.421 | | TUSCUMBIA | | 1926 |
| 1.2143 | | TUSCUMBIA, | | 1932 |
| 1.2643 | | TUSCUMBIA, | | 1912 |
| 2.46 | | TUSCUMBIA, | | 1923 |
| 2.46 | | TUSKEGEE | CQ | 1926 |
| 2.46 | CON | TUSKEGEE, | | 1954 |
| 2.421 | | UNION SPRINGS | | 1938 |
| 2.4214 | | UNIONTOWN | | 1914 |
| 2.421 | | UNIVERSITY | | 1922 |
| 2.4653 | | VINEMONT, | | 1938, 40 |
| 2.62 | | WADLEY | | 1938 |
| 2.466454 | | WARRIOR, | | 1938 |
| 2.460005 | | WEST BLOCTON / AL | | 1968 |
| 2.4263 | | WHISTLER | | 1917D, 26, 32 |
| 2.4243 | | WILSONVILLE | | 1938 |
| 2.4663 | | WINFIELD, | | 1938 |
| 2.4274 | | WYLAM | | 1917 |
| 4.4254 | | YORK | | 1932, 35 |

